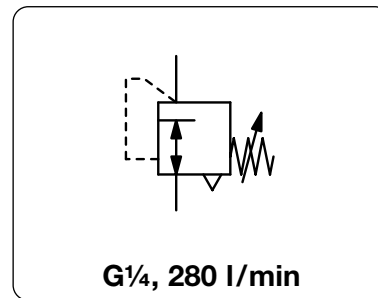


PRECISION PRESSURE REGULATOR

11-818

Description	Precision pressure regulator designed for precise pressure control in the event of changes in flow and supply pressure. Due to constant bleed slight blow-off sounds existing.	
Media	dry, oil-free and 25 µm filtered compressed air	
Supply pressure	max. 8 bar for 0.02...0.5 bar, max. 10 bar for 0.07...4 bar, max. 14 bar for 0.4...10 bar	
Accuracy	at varying supply pressures: < 20 mbar pressure deviation at varying volume flows: < 30 mbar pressure deviation at 5 °C / K temperature variation: < 3 mbar pressure deviation	
Air consumption	max. 2 l/min, subject to outlet pressure	
Adjustment	by handwheel for panel mounting, optionally by spindle	
Relieving function	relieving, 3 mm exhaust diameter	
Gauge port	G¼ on both sides of the body, optionally without gauge port	Mounting position any
Temperature range	0 °C to 70 °C / 32 °F to 158 °F, for appropriately conditioned compressed air down to -30 °C / -22 °F	
Material	Body: zinc die-cast Elastomer: NBR/Buna-N	Inner valve: brass, plastic



Dimensions			Description	P ₁ max.	Flow rate	Connection thread	Pressure range	Order number
A	B	C						
mm	mm	mm		bar	l/min*1	G	bar	

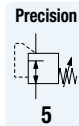
Precision pressure regulator								
P1: max. 8 / 10 / 14 bar, relieving, with constant bleed, accuracy < 30 mbar, K _v = 0.16 m³/h								
55	137	13	handwheel	8	280	G¼	0.02 ... 0.5	11-818-999
			w/o gauge port	10			0.07 ... 4.0	11-818-100
				14			0.40 ... 10	11-818-110
55	137	13	handwheel	8	280	G¼	0.02 ... 0.5	11-818-987
			with gauge port	10			0.07 ... 4.0	11-818-993
				14			0.40 ... 10	11-818-991
55	137	13	spindle	8	280	G¼	0.02 ... 0.5	11-818-998
			w/o gauge port	10			0.07 ... 4.0	11-818-101
				14			0.40 ... 10	11-818-112

Special options, add the appropriate letter

tamper-proof cap made of brass, adjustment by screwdriver, total height 108 mm 11-818-...T

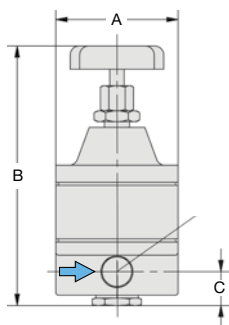


11-818-100

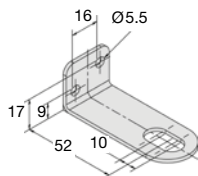


Accessories, enclosed

pressure gauge	Ø 50 mm, 0...*2 bar, G¼	MA5002-...*2
mounting bracket	made of steel, mounting nut at the device	BW12-01
tamper-proof cap	for metal sheet thickness from 2.5 up to 6 mm	3081-01



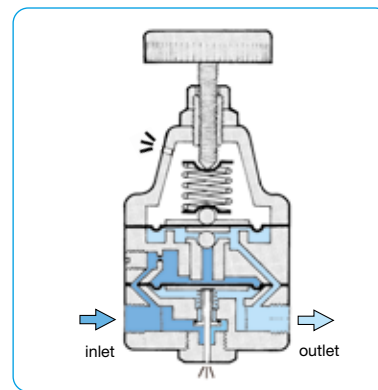
11-818



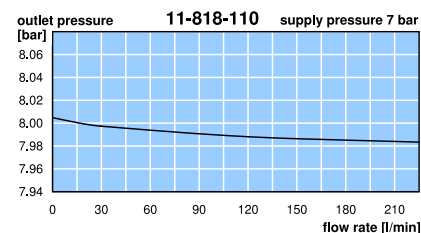
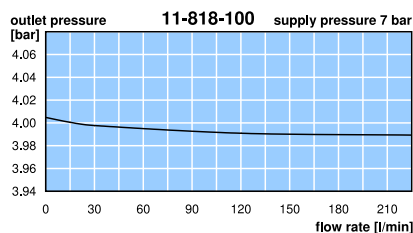
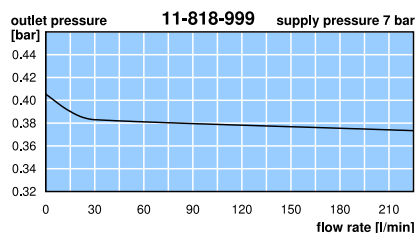
BW12-01



tamper-proof cap



cross-section



*1 at 7 bar supply pressure and 1.4 bar outlet pressure

*2 01 = 0...1 bar, 04 = 0...4 bar, 10 = 0...10 bar

Gauges: see chapter for measuring devices

PDF CAD
www.aircom.net



Order example:
11-818-999